

STAFFORD HILLS CLUB

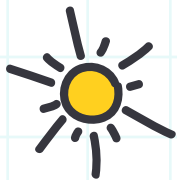


# KID'S CLUB HOURS



Ages 6 weeks-12 years old. Please make reservations for infants under 1 years old.  
\*Kids need to be checked in prior to 7pm Monday-Thursday. If no kids are in attendance  
Kids Club will close at 7pm.

Monday-Thursday	8:00am-7:30pm*
Friday-Saturday	8:00am-6:00pm
Sunday	8:00am-4:00pm

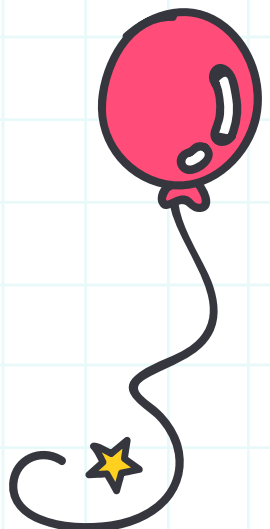
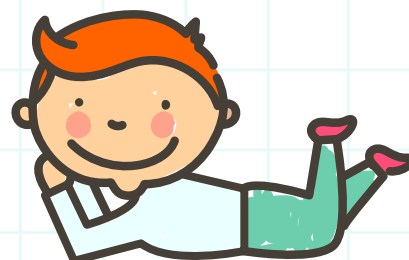
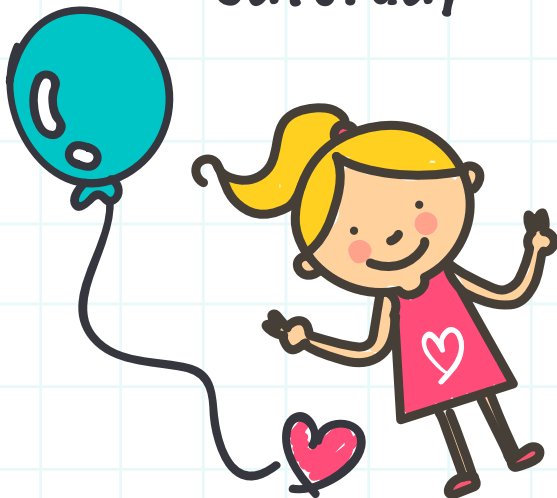


# JUNIOR'S CLUB ★ HOURS

Ages 5-12 years old. Drop Juniors off in Kids Club when Juniors Club is not open.

Saturday

9:00am-12:00pm



\*Effective January 1, 2018

# STAFFORD HILLS CLUB CHILD CARE INFO

## BACK TO BASICS AT SHC

At Stafford Hills Club we have a "back to basics" philosophy that celebrates childhood and allows kids to simply be kids. Our goal is to provide a nurturing drop-in program for children between that age of 6 weeks & 12 years.

We've taken a step back from technology and focus on building strong & nurturing relationships. On any given day you will find children participating in age appropriate active & dramatic play, arts & crafts, kid led group initiative games, classic board games, story time and anything else the imagination can dream up.

## What to Bring

- ◊ Bottle, sippy cup or water bottle
- ◊ Socks
- ◊ Diaper bag stocked with at least two diapers and wipes plus a change of clothes
- ◊ A small, nut free snack - No meals please

We will have "snack time" every hour on the hour for 15 min, supervised by a Kids Club Associate. This will allow kids to stay seated while they eat and will discourage the little ones from eating other kids food.

## Reservations

To ensure proper infant to staff ratio, we ask that reservations be made for infants under the age of one. Reservations can be made up to one week in advance.

We ask that when possible, cancellations be made 24 hours in advance. A cancellation fee of \$6 will be charged to the members account for a cancellation less than four hours in advance or for a no-show.

## Healthy Kiddos Please!

Please keep sick children at home. Do not bring your child if they are experiencing a fever, throwing up, have diarrhea or a runny nose with colored mucus.

## Fees

Family Memberships receive 2 hours of complimentary child care daily for every child listed on the member account. Additional time can be purchased according to the fee structure below with a limit of 4 hours maximum daily.

### SHC Family Members (3rd hour+)

\$10/hour 1<sup>st</sup> child  
\$7/hour 2<sup>nd</sup> child  
\$15/hour infant

### Non-Member Children (1-4 hours)

\$15/hour 1<sup>st</sup> child  
\$10/hour 2<sup>nd</sup> child  
\$18/hour infant

\*Effective January 1, 2018